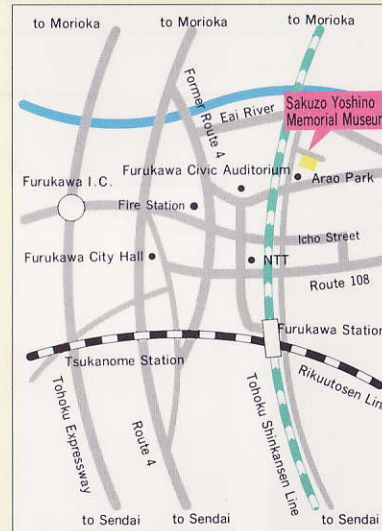


Democracy Birthplace

Sakuzo Yoshino Memorial Museum



Furukawa City



● Information Contact ●

Sakuzo Yoshino Memorial Museum

Fukunuma 1-2-3, Furukawa, Miyagi 989-61, Japan
Tel. 81-0229-23-7100 FAX 81-0229-23-4979

■ Admission Fee

	Single	Group (20 or more)
Adult	¥ 300	¥ 240
High School student	¥ 200	¥ 160
Elementary/Junior high school student	¥ 100	¥ 80

■ Open

9:00 a.m. to 4:30 p.m.
(Admission until 4:00 p.m.)

■ Closed

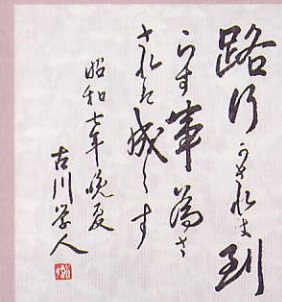
Mondays (open when Monday is a national holiday and closed Tuesday) and Dec. 28 to Jan. 4.

Sakuzo Yoshino The standard-bearer of the Taisho Democracy



Sakuzo Yoshino was born on January 29, 1878 at Tokamachi in Furukawa City, Miyagi, Japan. At the time of his professorship at the University of Tokyo, he was anxious about the gross delay in Japanese politics compared to Western countries. He insisted that politics should be based on the welfare of the people. While approving the Emperor system, Yoshino was emphatic about the abolition of Genro rule (government strongly influenced by elder statesmen) and the Privy Council which had been remote from the people, and restraining the privilege of the House of Peers and the military. Despite suppression by authorities, he continued his efforts to establish an administration whose aim is the people's happiness. This administration would place the national assembly members elected by the people at its center, and be led by the Prime Minister of a party cabinet, who would take public opinion into consideration. Dr. Yoshino's advocacy of democracy, however, came to no fruition until Japan paid a painful cost by defeat in World War II and the new Constitution of Japan was enacted at long last. Yoshino was certainly a great pioneer who was concerned about and loved the country, and foresaw the ideal of the new constitution more than forty years before it was established. Sakuzo Yoshino died at the age of fifty-five on March 18, 1933, in the midst of the Manchurian Incident, to which he had been strongly opposed.

(By Nobuhiko Gionji)

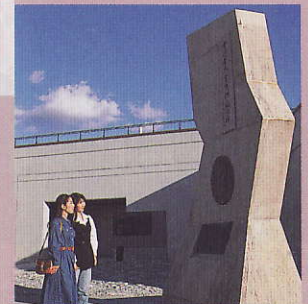


"Furukawa Gakujin
(A student from Furukawa)"
A pen name of Sakuzo Yoshino who loved his home town, Furukawa

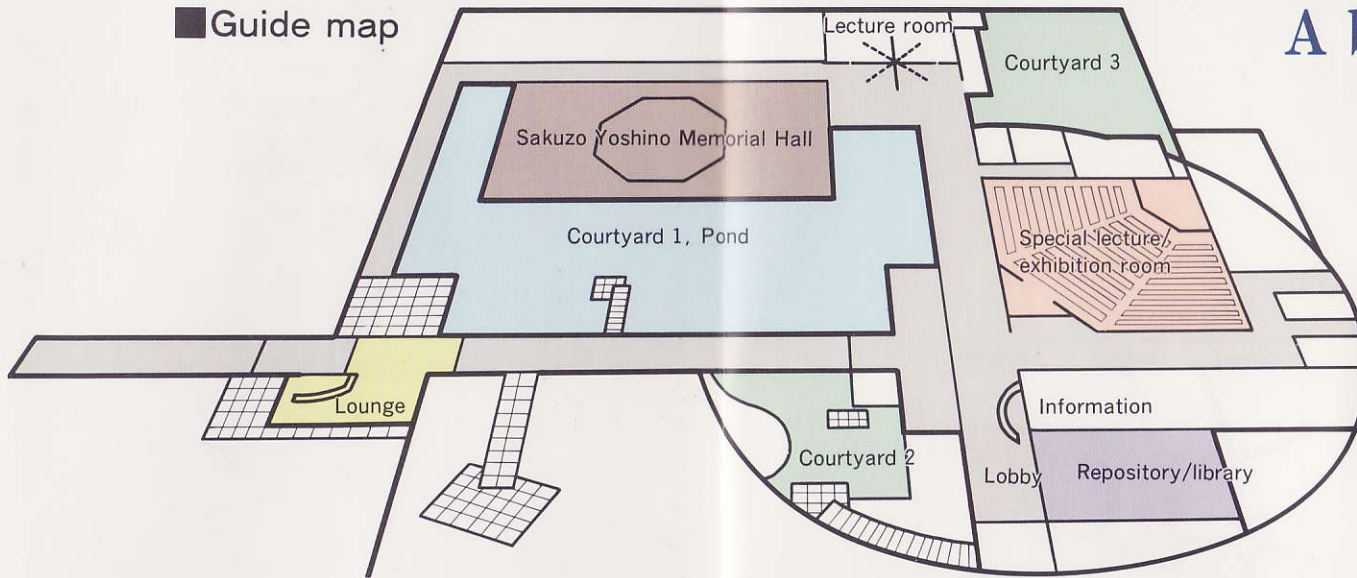
"Who does not start walking cannot attain his destination, and who does not set to work cannot achieve an end."

A monument erected in honor of Sakuzo Yoshino

- Title: Nyozekan Hasegawa
- Relief: Sogan Saito (Son-in-law of Sakuzo Yoshino)
- Inscription: Matasuke Kawamura (A follower of Sakuzo Yoshino)
- Design: Tsuneo Maki



■ Guide map



A bridge between the Taisho Era, Today and the Future

Dr. Sakuzo Yoshino knew other countries, worried about the future of Japan and fought for political reforms. In retracing his work, we can visualize an ideal picture of his future Japan.

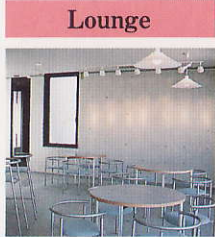
Permanent exhibition room

The room is divided into five areas to present a clear display of the achievement and image of Sakuzo Yoshino.



**Special lecture/
exhibition room**

Special lecture meetings and exhibitions concerning Yoshino are held in this area.



Lounge



Information

The clerks at the information desk give visitors various information about the museum.



Yoshino as a cosmopolitan

The international mind of Yoshino is shown, with accent on the explanation of his religious faith in Christianity and his understanding of China and Korea.



Yoshino as a journalist

Yoshino's participation in political and social movements is explained, focusing on his role as a journalist and campaigner for enlightenment. A 100-inch book shaped screen and a triple multi-slide screen display the life of Yoshino.



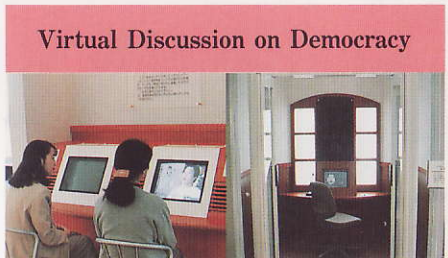
Yoshino as a scholar

Yoshino's achievement as a political scientist and historian is introduced in this area.



Prologue

The life of Yoshino is outlined, contrasting with the movement of the age in and out of Japan.



Virtual Discussion on Democracy

Computers are installed to accumulate and display visitor's opinions on current topics. Active citizen participation is realized in the activities of the museum.



Yoshino and Miyagi Prefecture

Yoshino's relationship with his birthplace, the cradle of his ways of thinking, and his family are on display.

